

Stricktux-Addon: Plussy

You can add a Plussy -the sign of the fellowship of FSFE- to Tux's belly.

Materials:

- Yarn in the same weight as the body
- colors: white and green



Plussy

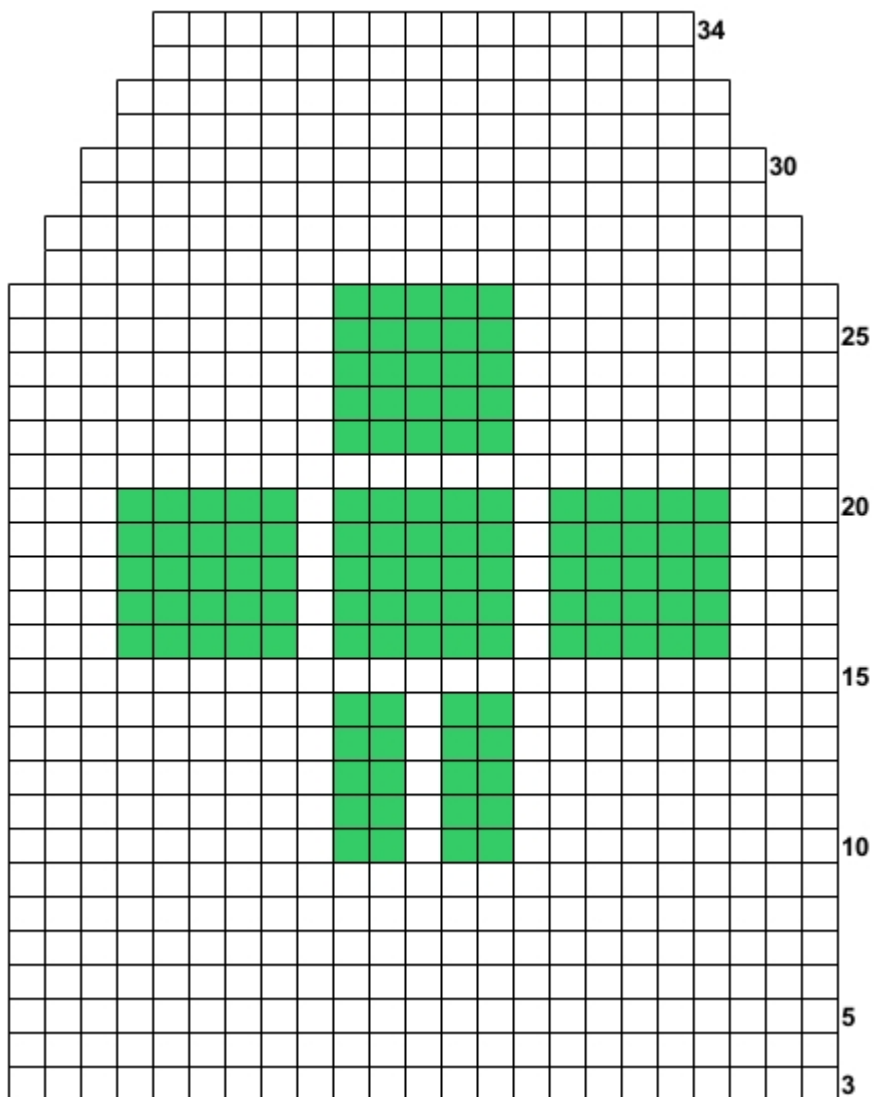
white and green

The plussy can be knitted directly in stranded knitting, or can be applied afterwards in duplicate stitch.

There is a good duplicate stitch tutorial available at

http://bellaknitting.typepad.com/bella_knitting/2007/08/duplicate-stitch.html

The chart starts at row 3 of Tux's belly.



Do you like this pattern?

This pattern is provided, as are all the patterns on stricktux.de, free of charge.

The Creative Commons license allows you to redistribute and change this pattern, but not to sell it. The only conditions are that my name must be included on any altered patterns as author of the original pattern, and that you also distribute under the CC:BY-NC-SA license.

Nonetheless, I would be pleased by some small recognition for the pattern. I would be particularly glad to see pictures of projects from stricktux.de patterns. Please send your pictures to bilder@stricktux.de.

Mention stricktux.de on Twitter, Identi.ca, Facebook, Google+, Diaspora, your blog or wherever else you can think of. Every visit to the site tells me I'm not just doing this for myself!

Perhaps you might be inclined to make a small financial contribution to the project. Of course, this would also please me. Believe me, even [stricktuxes](http://stricktux.de) get hungry :-)

Birgit Hüsken



<http://flattr.com/t/535795>

...or via paypal to paypal@stricktux.de

Stricktux-Addon: Plussy (Status: 09/05/2012)
A pattern by Birgit Hüsken - <http://stricktux.de>
Translation by Linke Masche

